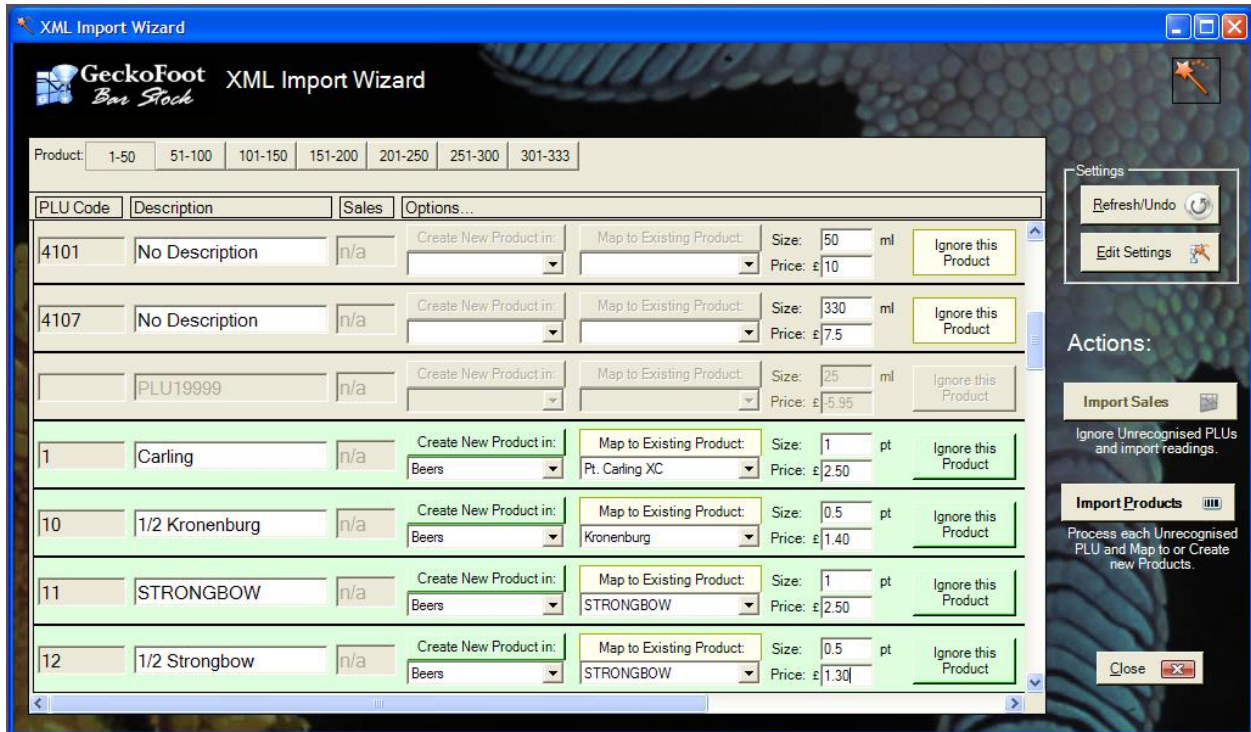


XML Import Wizard

When you load an XML file when importing till readings or Products, there is now a XML Import Wizard which is shown when an XML file is read:



Products are separated into 50 products per page. Select the page you need by clicking the tabs along the top of the page.

Refresh/Undo – this will re-parse the file and undo any changes you made since the data was loaded.

Edit Settings – this allows you to configure the way the XML files are read.

Import Sales – this is enabled if the file included any sales figures, click this to add sales for all recognised products (the ones in green) from every page.

Import Products – this allows you to import products on the current page as specified below.

Colour Coding

When the XML Import Wizard parses the XML file it makes judgements about what to do based on the contents of the file and current setup.

The colours are as follows:

Green – “PLU Found” - the PLU code has been recognised so the default behaviour is to map to that product. Note that some PLU codes are set up in default products, so please check that these are correctly mapped.

10	1/2 Kronenburg	n/a	Create New Product in: Beers	Map to Existing Product: Kronenburg	Size: 0.5 pt Price: £1.40	Ignore this Product
----	----------------	-----	---------------------------------	--	------------------------------	---------------------

Blue – “Map PLU to Product” - the PLU code is not recognised but it has made a guess that the named product could correspond to one found in the existing database. It just compares words so please check that the mapping is correct:

426	Fosters	n/a	Create New Product in: Draft Beer & Cider	Map to Existing Product: Fosters Draft Beer	Size: 1 pt Price: £2.25	Ignore this Product
-----	---------	-----	--	--	----------------------------	---------------------

Yellow – “Create Product” - the PLU code is not recognised nor can it find a likely product, but can suggest a likely product type in which a new item could be inserted.

7	John Smiths	n/a	Create New Product in: Beers	Map to Existing Product:	Size: 1 pt Price: £2.50	Ignore this Product
---	-------------	-----	---------------------------------	--------------------------	----------------------------	---------------------

Grey – “Ignore Product” – the PLU code, product name and type are all unrecognised so it cannot give any suggestions. These may be products that you wish to ignore or you may change settings manually.

4107	No Description	n/a	Create New Product in:	Map to Existing Product:	Size: 330 ml Price: £7.5	Ignore this Product
------	----------------	-----	------------------------	--------------------------	-----------------------------	---------------------

Grey & Disabled – “Invalid PLU” – there was no PLU code recognised so you cannot add this product or import sales figures for this item. Please check the file format and check the “PLU Fields” in the settings window.

	PLU19999	n/a	Create New Product in:	Map to Existing Product:	Size: 25 ml Price: £5.95	Ignore this Product
--	----------	-----	------------------------	--------------------------	-----------------------------	---------------------

Product Details

The product details are as follows:

Main Section

4003	Pt. Carling XC	2	Create New Product in: Beers	Map to Existing Product: Pt. Carling XC	Size: 1 pt Price: £3.00	Ignore this Product
------	----------------	---	---------------------------------	--	----------------------------	---------------------

PLU Code – this is read from the file and cannot be changed manually and allows BarStock to map from a product sold to a physical product and a quantity or volume sold per sale.

Product Name – the default is read from the file (if specified) but you can edit this if you are creating a new product. The product name in BarStock does not need to match those in the Till System.

Sales – this is the number of unit sales for that product if you are importing till readings and it has been specified in the file. If this not set then “n/a” is shown and you can only Import product details into the database for this product.

Create New Product in: Product Group – select the product group that the product should live in. Click “Create New Product in” if you wish to create a new product of the specified type. To create a new product group and for other settings for creating products see the CREATE PRODUCT SECTION.

Map to Existing Product: Product Name – the product name drop down will show all products in the selected product group. Select the required product and click “Map to Existing Product” to permanently map this PLU to the selected product.

Size – the size is the number of items or the volume of the sale indicated by this PLU. Note below that you can have different PLUs mapped to the same product with different volumes. You can edit this value before creating a new product or mapping a PLU to a product:

Price – this is read from the file if specified but can be edited here before creating a new product. The is the retail price of the item sold identified by that PLU.

11	STRONGBOW	n/a	Create New Product in: Beers	Map to Existing Product: STRONGBOW	Size: 1 pt Price: £ 2.5	Ignore this Product
12	1/2 Strongbow	n/a	Create New Product in: Beers	Map to Existing Product: STRONGBOW	Size: 0.5 pt Price: £ 1.3	Ignore this Product

Ignore Product – click this button to ignore this product.

Create Product Section

On the far right are a set of defaults, some of which can be loaded from the XML file. Other defaults are created or derived from other details selected.

Other details for product creation.		Till Product Group	
Std Stock Size:	1.0 gal	Beers	
Default Cost:	£ 8.00	ABV:	5.00
		Add	

Std Stock Size – this is the volume or number for a standard stock unit – the units used are specified by the product type.

Cost – this is the cost for a standard stock unit – e.g. 1 Gallon for Beers or 70cl for wine.

ABV – you can edit this before creating a new product.

Till Group – this shows the till group is specified in the file and helps the XML Import Wizard determine what type of product it is if the product PLU and name are unrecognised.

Add – click Add to add a new product group/type for this type of item.

Importing Readings

If you believe you have already imported all relevant products into barstock – click Import Sales and it will import readings from all readings shown in Green from every page.

Importing Products

Export a XML file from your till system with as much product information as possible.

Load the file into the XML Import Wizard – either from the Import button on the Product list or from Till Reading Import.

Check the file format and add field names used by the system in the XML Import Settings as required – send your files to barstock for advice if unsure.

When first importing you may want to add new groups which match those on your Till System if they are specified – this will make adding products easier.

On the far right of the product row there is a Till Group field - click Add to add a Product Type to match the one the till uses.

For example if you click Add from the Beers group you can enter a new type as below:



The screenshot shows a dialog box titled "GeckoFoot BarStock Product Type Editor". The "Type Name" field contains "Beers". There are two sections: "Containers" and "Units". The "Containers" section has "Name" set to "Gallons", "Default Vol" set to "1.0", and "Unit" set to "Imperial Gallon (gal)". The "Units" section has a checked "Units" checkbox, "Name" set to "Pints", "Default Vol" set to "1.0", and "Unit" set to "Imperial Pint (pt)". At the bottom are "OK", "Cancel", and "Help" buttons.

Then when done, click Refresh on the IMPORT WIZARD and all the products highlighted as Beers will be selected as Beers.

Containers are the default item or quantity as stocked and Units are the amount or volume as normally sold. More examples below:

GeckoFoot BarStock Product Type

GeckoFoot Bar Stock Product Type Editor

Type Name: Alcopops

Containers:

Name: Crates

Default Vol: 4.0

Unit: Litres (L)

Units:

Name: Bottles

Default Vol: 330.0

Unit: Millilitres (ml)

OK Cancel Help

GeckoFoot BarStock Product Type

GeckoFoot Bar Stock Product Type Editor

Type Name: Food

Containers:

Name: Meal

Default Vol: 1.0

Unit: Items (fms)

Units:

Name:

Default Vol: 0.0

Unit:

OK Cancel Help

After adding required Groups, remember to click Refresh/Undo to allow BarStock to detect the new groups and identify which new products should be part of those groups.

Go through each product and check the product settings – refer back to the Product Details for more details.

You must go to each page and click Import Products to add all products on that page.